

## HEADQUARTERS

FAAC spa  
Via Calari 10 - 40069 Zola Predosa (BO)  
Tel. +39 051 61724 - Fax +39 051 758518  
info@faac.it - www.faacgroup.com

## FAAC SUBSIDIARIES

FAAC AG  
Tel. +41 41 8713440  
Fax +41 41 8713484  
Altdorf, Switzerland  
www.faac.ch

FAAC FRANCE  
Tel. +33 4 72218700  
Fax +33 4 72218701  
Corbas, France  
www.faac.fr

FAAC GMBH  
Tel. +49 8654 49810  
Fax +49 8654 498125  
Freilassing, Germany  
www.faac.de

FAAC MIDDLE EAST BRANCH  
Tel. +971 42146733  
Fax +971 42146734  
Dubai Airport Free Zone, UAE  
www.faac.ae

F.A.A.C. SA  
Tel. +34 91 6613112  
Fax +34 91 6610050  
Madrid, España  
www.faac.es

FAAC UK LTD.  
Tel. +44 1256 318100  
Fax +44 1256 318101  
Basingstoke Hampshire, UK  
www.faac.co.uk

FAAC AUSTRALIA PTY LTD  
Tel. +61 2 87565644  
Fax +61 2 87565677  
Homebush - Sydney, Australia  
www.faac.com.au

FAAC NORD  
Tel. +33 1 69191620  
Fax +33 1 69191621  
Massy, France  
www.faac.fr

FAAC INDIA PVT. LTD  
Tel. +91 120 3934100/4199  
Fax +91 120 4212132  
Noida - Delhi, India  
www.faacindia.com

FAAC POLSKA SP.ZO.O.  
Tel. +48 22 8141125  
Fax +48 22 8142024  
Warszawa, Polska  
www.faac.pl

F.A.A.C. SA Delegación Cataluña  
Tel. +34 93 4362000  
Fax +34 93 4368225  
Barcelona, España  
www.faac.es

FAAC BENELUX  
Tel. +32 50 320202  
Fax +32 50 320242  
Brugge, Belgium  
www.faacbenelux.com

FAAC GE.S. M.B.H.  
Tel. +43 662 8533950  
Fax +43 662 85339520  
Wals - Siezenheim, Austria  
www.faac.at

FAAC INTERNATIONAL INC.  
Tel. +1 307 6351991  
Fax +1 307 6328148  
Cheyenne, USA  
www.faacusa.com

FAAC SCANDINAVIA AB  
Tel. +46 36 376860  
Fax +46 36 370780  
Bankeryd, Sweden  
www.faac.se

FAAC SHANGHAI  
Tel. +86 21 68182970  
Fax +86 21 68182968  
Shanghai, China  
www.faac.com.cn

500 - Zucchini - 09/2009. The descriptions and illustrations contained in the present brochure are not binding. FAAC reserves the right to undertake product technical modifications without prior notice.



## TK20

Profile line for automatic entrances  
with reduced section of 20 mm.

**FAAC**  
*Simply automatic.*





TK20 PROFILES

Profile line for automatic entrances with reduced section of 20 mm.

Slender, light, easy to use while respecting legal standards are the features of these new profiles made to add a refined and innovative design to the advantages of an automatic sliding entrance.

Thanks to their simple construction, this series of profiles and seals, can be machined by just using one cropper and other common utensils. This characteristic will make things easy for all customers looking to make automatic entrances where nothing is left to chance and, at the same time, it is appreciated for the quality of the supplied article.

The FAAC cutting configuration, coupled to the technical drawings, will enable the installer to make, in simple small steps, a cutting list of all the profiles and seals making up the entrance. The configuration also supplies the dimensions of the glass panels. The assembly manual will enable correct installation procedure.

ITEM OF SPECIFICATIONS TK20

Aluminium alloy profiles with reduced section, series FAAC TK20, with thickness of 20 mm., width of 25mm., complete with gaskets to house glass panels of a thickness of 8 mm or 10 mm with PVB foil 0.76. Rubber gaskets are interlock-fitted in the centre of the sliding leaves and on the sides a special basket is used acting on the fixed leaf vertical side on stroke. Both gaskets improve the thermal insulation of the entrance.

The central uprights of the fixed leaf are 30 mm. wide and have a double groove to house the photocell. The groove and the visible wires of the photocells will be closed by a quick-release rigid gasket.

The lower base is 80 mm high and a seat inside it houses a special plastic profile with the following functions:

- brush support between leaf and floor for the thermal insulation
- sliding guide of the sliding block made of stainless steel.

DISEGNI / DRAWINGS nr. 02 - 02A - 02B  
930/940/A100COMPACT

Disegni  
Drawing

COMPILARE GLI SPAZI COLORATI DI  
GIALLO  
PLEASE FILL THE YELLOW COLOURED FIELDS

Nr° Ante Mobili / Nr. Sliding Doors1

Nr° Ante Fisse / Nr. Fixed Doors0

Soluzione (vedi disegni) / Solution (see drawings)A

Tipo Motorizzazione / Motorization type930N SF

Nr° Pezzi / Nr. Pieces1

LVM Luce Vano Muro (mm.) / Wall Width1000

LVP Luce Vano Passaggio (mm.) / Free Passage Width990

HVM Altezza Vano Muro (mm.) / Wall Height = altezza sotto carter traversa / height below motorization2200

HVP Altezza Vano Passaggio (mm.) / Free Passage Height2198

Spessore vetro (mm.) / Glass thickness8

Peso anta (kg.)  
- Door weight -46

N.B.: con pesi superiori a 120 kg.  
(930N SF) per anta singola, si  
consiglia di utilizzare la  
motorizzazione tipo 940 SM.  
Limite utilizzo A100COMPACT:  
110 kg.  
- PLEASE NOTE: if single door  
weight exceeds than kgs. 120  
(930N SF), we suggest to use

Descrizione / Description	Codice / Code	Quantità / Quantity	Misura / Measure (mm.)	Taglio / Cutting angles	Orientamento / Assembly direction	Disegno / Drawing
Profilo verticale portafotocellulare per fissaggio a muro / Fixing wall vertical profile with photoelectric cell	105804	2	2219	90°-90°	verticale vertical	
		1	996	90°-90°	orizzontale horizontal	
Profilo verticale battuta anta singola / Vertical profile for single door locking	105809	1	2219	90°-90°	verticale vertical	
Telaio di fissaggio a muro anta fissa / Fixing wall frame for fixed door	105808					
Profilo verticale per anta mobile asolato e forato / Vertical profile for sliding door	105801	2	2211	90°-90°	verticale vertical	
Profilo verticale per anta fissa asolato e forato / Vertical profile for fixed door	105802					
Traverso superiore / Upper door profile	105805	1	966	90°-90°	orizzontale horizontal	
Traverso inferiore / Lower door profile	105806	1	966	90°-90°	orizzontale horizontal	

Distinta accessori / Accessories list

Descrizione / Description	Codice / Code	Quantità / Quantity	Misura / Measure (mm.)	Taglio / Cutting angles	Orientamento / Assembly direction	Disegno / Drawing
Guarnizione per vetro da 8 mm. (4+4) - 8 (4+4) mm. thickness glass gasket -	105811	1	6194	90°-90°	sui 4 lati on the 4 sides	
Guarnizione di tenuta laterale / Side holding gasket	105812	1	2216	90°-90°	verticale vertical	
Guarnizione di tenuta centrale anta mobile / Sliding door central holding gasket	105813	1	2216	90°-90°	verticale vertical	
Guarnizione di tenuta centrale / Central holding gasket	105813	1	2224	90°-90°	verticale vertical	
Profilo plastico di guida inferiore anta mobile / Lower sliding plastic profile for sliding door	105814	1	998	90°-90°	orizzontale horizontal	
Profilo plastico per chiusura profilo portafotocellulare / Plugging plastic profile for profile with photoelectric cell	105816	2	2219	90°-90°	verticale vertical	
Kit accessori anta mobile / Accessories kit for sliding door	105817	1				
Piastrine per fissaggio carrelli per anta mobile / Small plate for sliding door trucking wheels fixing	105819					
Spazzolino / Brush	105346	1	998	90°-90°	orizzontale horizontal	

Distinta di taglio vetri / Cutting glasses list

Quantità / Quantity	Larghezza / Width (mm.)	Altezza / Height (mm.)	Tipo / Type
1	993	2104	Vetro da 8 mm. (4+4) - 8 (4+4) mm. glass -

Sezione A-A

A100 vertical section with TK20 profiles

Detail of the striker nodes of mobile and fixed leaves for heat resistance

Detail of the different striking systems of sliding leaves if installed in a corridor compartment or in a compartment with edge



## TK50

Automatic entrances  
with increased section profile of 50 mm.

**FAAC**  
*Simply automatic.*

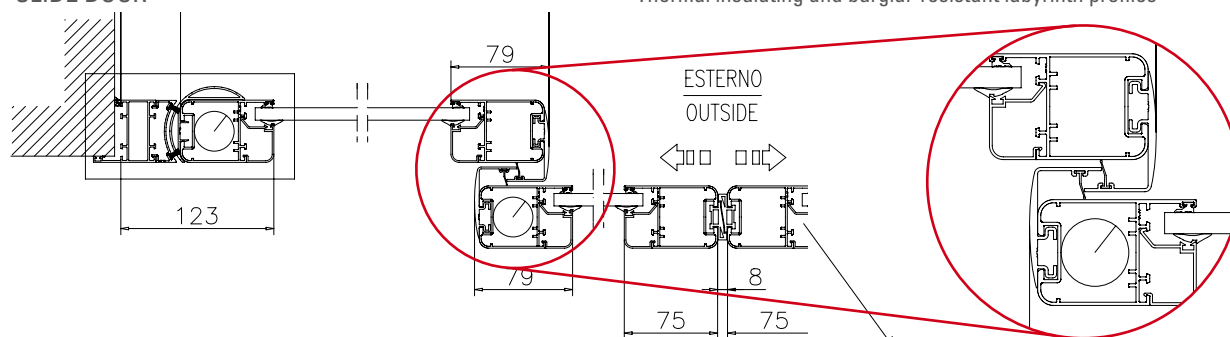
## TK50 PROFILES

Automatic entrances with increased section profile of 50 mm.

The sturdiness of these profiles and their innovative design, are the features for those looking for an automatic entrance for installation in places with a high volume of traffic where trolleys and suitcases may be present.

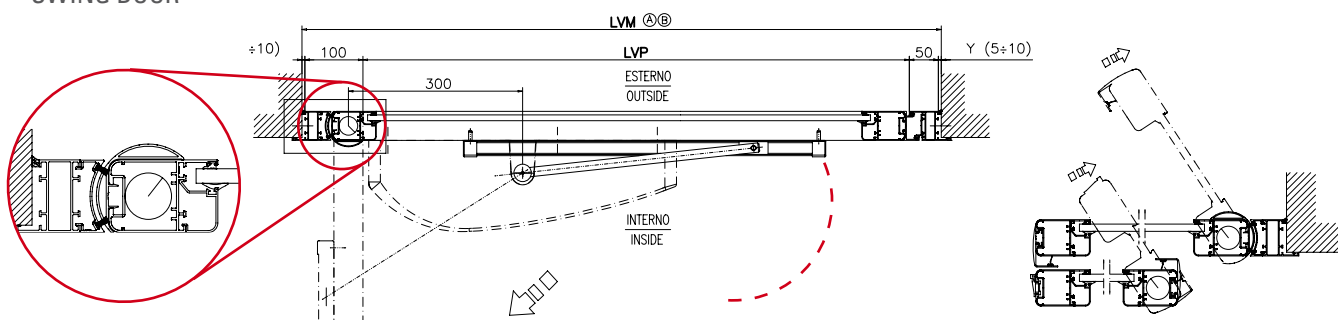
The TK50 profiles are designed to be perfectly integrated with a break-out anti-panic system for applications requiring an emergency exit.

### SLIDE DOOR

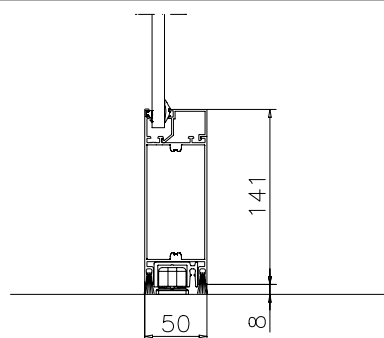


Accident-Prevention Rounded Sliding Profiles Complete With Heat-Resistance Central Striker Seals

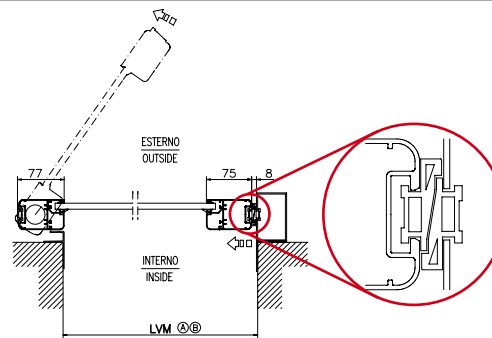
### SWING DOOR



Accident-prevention rounded profile for break-out sliding semi-fixed leaves and swing-leaves



Heat-resistance brush between leaf and floor



Striker seal studied to facilitate the break-out ability of the sliding leaf



## ITEM OF SPECIFICATIONS TK50

Aluminium alloy profiles, series FAAC TK50, with thickness section of 50 mm., for automatic entrances with sliding and leaf doors.

Complete with glass-retaining profiles and gaskets to house glass panels up to a max thickness of 32 mm.

The base is 141 mm high and an internal seat houses the brushes for the thermal insulation and the sliding rails of the floor sliding block. In the application coupled with the anti-panic break-through system APN, the profiles are coplanar with the structure and without visible hinges. Rubber gaskets for the thermal insulation are fitted in the centre of the sliding leaves.

A "labyrinth" system is used on the sides consisting of two vertical profiles and an end-stroke gasket which intersect when doors are closed. This labyrinth increases the thermal insulation of the entrance and improves the resistance to breaking in the event of entrances coupled with anti-panic break-through system.

Pivoting rotation system of the leaves without cutting and crushing risk (also valid for the semi-fixed leaves of the anti-panic break-through system) in compliance with the Machine Directive.

## TABLE OF THE DRAWINGS OF ENTRANCES WITH TK50 PROFILES

Engines	Type		Automated system assembly solution	drawing number
930N SF	1 mov. leaf	without leaves break-out	on wall	1
			on head profile with transom	2
		with leaves break-out	on wall	3
			on head profile with transom	4
	2 mov. leaves	without leaves break-out	on wall	5
			on head profile with transom	6
		with leaves break-out	on wall	7
			on head profile with transom	8
	2 mov. leaves + 2 fixed leaves	without leaves break-out	on head profile	9
			on wall	10
			on head profile with transom	11
			on head profile	12
		with leaves partial break-out	on wall	13
			on head profile with transom	14
		with leaves total break-out	on head profile	15
			on wall	16
	1 mov. leaf + 1 fixed leaf	without leaves break-out	on head profile with transom	17
			on head profile	18
			on wall	19
		with leaves total break-out	on head profile with transom	20
			on head profile	21
			on wall	22
940 SM	1 mov. leaf	without leaves break-out	on head profile with transom	23
			on wall	24
		with leaf break-out	on head profile with transom	25
			on wall	26
	2 mov. leaves	without leaves break-out	on head profile with transom	27
			on wall	28
		with leaves break-out	on head profile with transom	29
			on wall	30
	2 mov. leaves + 2 fixed leaves	without leaves break-out	on head profile with transom	31
			on head profile	32
			on wall	33
			on head profile with transom	34
		with leaves partial break-out	on head profile	35
			on wall	36
		with leaves total break-out	on head profile with transom	37
			on head profile	38
940 SMT	1 mov. leaf + 1 fixed leaf	without leaves break-out	on wall	39
			on head profile with transom	40
		with leaves total break-out	on head profile	41
			on wall	42
	2 mov. leaves	telescopic	on head profile with transom	43
			on head profile	44
			on wall	45
			on head profile with transom	46
		telescopic	on head profile with transom	47
			on wall	48
			on head profile with transom	49
			on wall	50
950 N	2 mov. leaves + 1 fixed leaf	telescopic	on head profile with transom	51
			on wall	52
		telescopic	on head profile with transom	53
			on wall	54
	4 mov. leaves	telescopic	on head profile	55
			on wall	56
			on head profile with transom	57
			on wall	58
		telescopic	on head profile	59
			on wall	60
			on head profile with transom	61
			on wall	62
A100 COMPACT	1 mov. leaf	senza sfondamento ante	on head profile with transom	63
			on wall	64
		with leaf break-out	on head profile with transom	65
			on wall	66
	2 mov. leaves	without leaves break-out	on head profile with transom	67
			on wall	68
		with leaves break-out	on head profile with transom	69
			on wall	70
	2 mov. leaves + 2 fixed leaves	without leaves break-out	on head profile	71
			on wall	72
			on head profile with transom	73
			on wall	74
		with leaves partial break-out	on head profile	75
			on wall	76
		with leaves total break-out	on head profile with transom	77
			on wall	78
A140 AIR	1 mov. leaf + 1 fixed leaf	without leaves break-out	on head profile	79
			on wall	80
		with leaves partial break-out	on head profile with transom	81
			on wall	82
	2 mov. leaves	without leaves break-out	on head profile with transom	83
			on wall	84
			on head profile with transom	85
			on wall	86
		with leaves partial break-out	on head profile	87
			on wall	88
		with leaves total break-out	on head profile with transom	89
			on wall	90
A140 AIR TELESCOPIC	1 mov. leaf	with leaves total break-out	on head profile with transom	91
			on wall	92
		with leaf break-out	on head profile with transom	93
			on wall	94
	2 mov. leaves	without leaves break-out	A140 AIR	95
			on head profile with transom	96
		with leaves break-out	with leaf break-out	97
			on head profile with transom	98
	2 mov. leaves + 2 fixed leaves	without leaves break-out	2 ante mobili	99
			on head profile with transom	100
			with leaves break-out	101
			on head profile with transom	102
		with leaves partial break-out	without leaves break-out	103
			on wall	104
		with leaves total break-out	on head profile with transom	105
			on head profile	106
A140 AIR TELESCOPIC	1 mov. leaf + 1 fixed leaf	without leaves break-out	on wall	107
			on head profile with transom	108
		with leaves partial break-out	on head profile	109
			on wall	110
	2 mov. leaves	telescopic	on head profile with transom	111
			on head profile	112
			on wall	113
			on head profile with transom	114
		telescopic	on head profile	115
			on wall	116
			on head profile with transom	117
			on wall	118
A140 AIR TELESCOPIC	2 mov. leaves + 1 fixed leaf	without leaves break-out	on head profile with transom	119
			on wall	120
		with leaves partial break-out	on head profile	121
			on wall	122
	4 mov. leaves	telescopic	on head profile with transom	123
			on wall	124
			on head profile with transom	125
			on wall	126
		telescopic	on head profile	127
			on wall	128
			on head profile with transom	129
			on wall	130

## HEADQUARTERS

### ITALY

FAAC SpA  
Via Calari 10 - 40069 Zola Predosa (BO)  
Tel. +39 051 61724 - Fax +39 051 758518  
it.info@faacgroup.com - www.faacgroup.com

## SUBSIDIARIES

### AUSTRALIA

FAAC AUSTRALIA PTY LTD  
Homebush – Sydney, Australia  
tel. +61 2 87565644  
fax +61 2 87565677  
www.faac.com.au

### AUSTRIA

FAAC GMBH  
Salzburg, Austria  
tel. +43 662 8533950  
fax +43 662 85339525  
www.faac.at

FAAC TUBULAR MOTORS  
tel. +49 30 56796645  
fax +49 30 22409006  
faactm.info@faacgroup.com  
www.faac.at

### BENELUX

FAAC BENELUX NV/SA  
Brugge, Belgium  
tel. +32 50 320202  
fax +32 50 320242  
www.faacbenelux.com

FAAC TUBULAR MOTORS  
Schaapweg 30  
NL-6063 BA Vlodrop, Netherlands  
tel. +31 475 406014  
fax +31 475 406018  
faactm.info@faacgroup.com  
www.faacbenelux.com

### CHINA

FAAC SHANGHAI  
Shanghai, China  
tel. +86 21 68182970  
fax +86 21 68182968  
www.faacgroup.cn

### FRANCE

FAAC FRANCE  
Saint Priest - Lyon, France  
tel. +33 4 72218700  
fax +33 4 72218701  
www.faac.fr

FAAC FRANCE - AGENCE PARIS  
Massy - Paris, France  
tel. +33 1 69191620  
fax +33 1 69191621  
www.faac.fr

FAAC FRANCE - DEPARTEMENT VOLETS  
Saint Denis de Pile - Bordeaux, France  
tel. +33 5 57551890  
fax +33 5 57742970  
www.faac.fr

### GERMANY

FAAC GMBH  
Freilassing, Germany  
tel. +49 8654 49810  
fax +49 8654 498125  
www.faac.de

FAAC TUBULAR MOTORS  
tel. +49 30 56796645  
fax +49 30 22409006  
faactm.info@faacgroup.com  
www.faac.de

### INDIA

FAAC INDIA PVT. LTD  
Noida – Delhi, India  
tel. +91 120 3934100/4199  
fax +91 120 4212132  
www.faacindia.com

### IRELAND

NATIONAL AUTOMATION LTD  
Co. Roscommon, Ireland  
tel. +353 71 9663893  
fax: +353 71 9663890  
www.nal.ie

### MIDDLE EAST

FAAC MIDDLE EAST FZE  
Dubai Silicon Oasis Operation Center - Dubai, UAE  
tel. + 971 4 3724190  
fax+ 971 4 3724191  
www.faac.ae

### NETHERLANDS

KEMKO BV  
Doetinchem, Netherlands  
tel. +31 314 378777  
fax +31 314 362224  
www.kemko.nl

### NORDIC REGIONS

FAAC NORDIC AB  
Perstorp, Sweden  
tel. +46 435 779500  
fax +46 435 779529  
www.faac.se

### POLAND

FAAC POLSKA SP.ZO.O  
Warszawa, Poland  
tel. +48 22 8141422  
fax +48 22 8142024  
www.faac.pl

### RUSSIA

FAAC RUSSIA  
Moscow, Russia  
tel. +7 (495) 646 24 29  
www.faac.ru

### SPAIN

CLEM, S.A.U.  
San Sebastián de los Reyes - Madrid, Spain  
tel. +34 91 3581110  
fax +34 91 7293309  
www.faac.es

### SWITZERLAND

FAAC AG  
Altdorf, Switzerland  
tel. +41 41 8713440  
fax + 41 41 8713484  
www.faac.ch

### TURKEY

FAAC OTOMATİK GEÇİŞ SİSTEMLERİ  
SAN. VE TİC. LTD. SİRTEKİ  
İstanbul, Turkey  
tel.+90 (0)212 - 3431311  
www.faac.com.tr

### UNITED KINGDOM

FAAC UK LTD.  
Basingstoke Hampshire, UK  
tel. +44 1256 318100  
fax +44 1256 318101  
www.faac.co.uk

### U.S.A.

FAAC INTERNATIONAL INC  
Fullerton, California - U.S.A.  
tel. +1 714 446 9800  
fax +1 714 446 9898  
www.faacusa.com