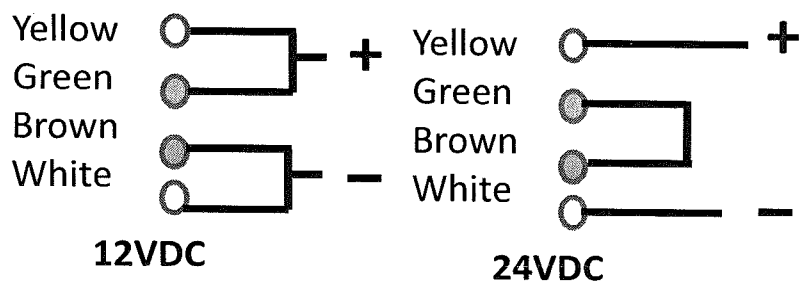


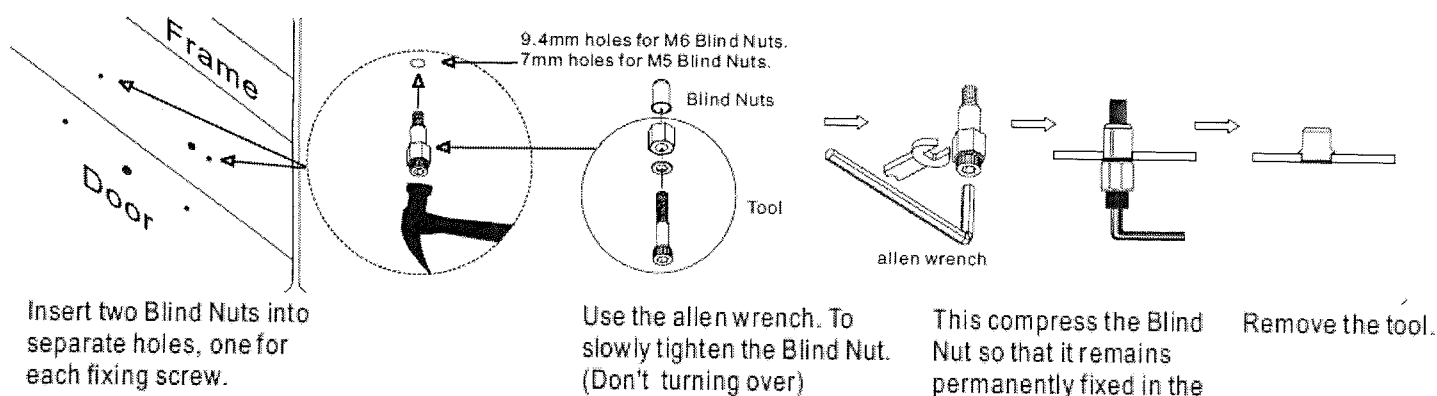
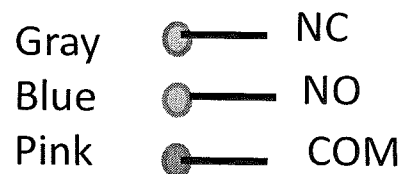
Model : Stainless Steel

WIRING INSTRUCTIONS

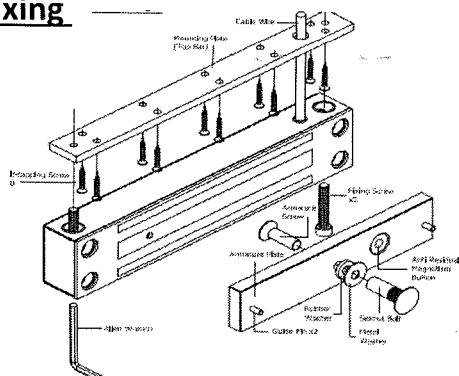
Set the wiring correctly
before power supply "ON"



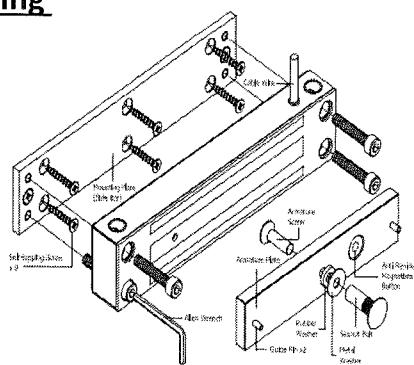
Reed switch contact



Side fixing



Face fixing



1. Drill the armature plate holes in the door using the sticker template provided .
2. Attach the armature plate to the door with the hardware provides .
3. With the door closed ,mark the door frame at the edge of the armature in order to properly align the electromagnet to the armature .
4. Drill the marking area .
- 5 Use the screw to permanently mount the mounting plate . mount the magnet with hardware proved .
- 6 mounting the armature plate to the door .
7. Make sur the guide pins are in the two guide pin hole
8. Install one rubber washer between two washer ,this will allow the armature plate to pivot slightly armature screw in order to compensate for door alignment .
9. Connect the power and test the unit close the door , use allen wrench or add washers to adjust the gap of armature plate and the magnet .