

A man and a woman are walking through a modern glass entrance. The woman is wearing a dark jumpsuit, a patterned scarf, and a straw hat, and is pulling a dark rolling suitcase. The man is wearing a blue button-down shirt and light-colored shorts, and is also pulling a dark rolling suitcase. They are both holding coffee cups. The entrance has large glass doors and a polished floor that reflects the scene. A potted plant is visible on the right side of the entrance.

# AS3000 SERIES

AUTOMATION FOR  
SLIDING DOORS

**FAAC**

# I First impressions matter. Make yours shine.

Presenting the FAAC AS3000 Series, the latest innovation in our sliding door automation range. Drawing on FAAC's extensive expertise in door automation, it blends innovation, performance, and reliability. The AS3000 Series not only delivering all the essential benefits of automatic doors but also enhances spaces with a welcoming atmosphere.

## I Advantages that matter Key benefits

INNOVATION  
PERFORMANCE  
RELIABILITY



**SILENCE,  
LONGEVITY AND  
SAFETY OF THE  
AUTOMATION**



**MODULARITY AND  
OPTIMIZATION OF  
COMPONENTS**



**EASY ASSEMBLY  
AND INSTALLATION**



**COMPLIANCE  
WITH SAFETY AND  
PERFORMANCE  
DIRECTIVES**



# I Where first impressions matter

## Versatile applications



**Hotel  
chains**



**Healthcare  
facilities**



**Public/corporate  
facilities**



**Government  
buildings**



**Other  
facilities**



**Shopping  
malls**



# | Engineered for what matters most

## Safety and environment features



### TÜV CERTIFICATION

Compliance with the European Standard EN16005 for use on escape routes.



### ESCAPE ROUTE SAFETY

Compliance with the European Standard EN13849 Pt.D Cat.2 (Redundance of the automation).



### LOW POWER CONSUMPTION

In standby mode, energy consumption is reduced to a maximum of 0.5W, in compliance with EU Directive 2009/125/EC and EU Regulation 2023/826.



### EPD VERIFIED

The Environmental Product Declaration (EPD) is an internationally recognized document that transparently, objectively, and comparably details a product's environmental impact, considering its entire life cycle.



# | A matter of flexibility

## Product range



### **AS3000 SERIES SLIDING DOOR AUTOMATION**

- AS3010 leaf weight up to 120 Kg
- AS3020 leaf weight up to 200 Kg
- AS3030 leaf weight up to 300 Kg

Available also in Telescopic version and Redundant with TÜV Certification for escape routes.

# | A matter of compatibility

## The AS3000 Series works seamlessly with:

**AIRSLIDE system (FAAC patent)** which integrates an automatic sliding door with a built-in air curtain, combining sleek design with energy efficiency. It reduces energy dispersion, enhances air quality by limiting external pollutants, and ensures optimal comfort by minimizing drafts.



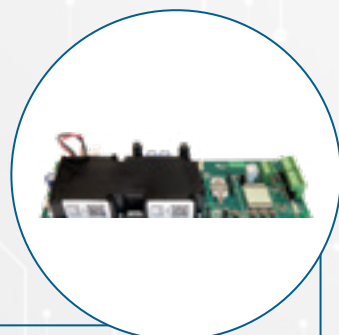
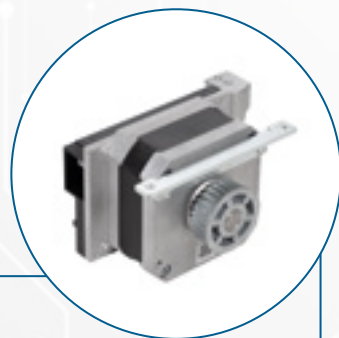
**TK20/TK35/TK50  
Door Profiles**  
(20mm, 35mm, 50mm thick  
aluminium alloy profiles)

# When performance matters

## Unique strengths

### 1. BRUSHLESS DIRECT DRIVE MOTOR

- Long-lasting **Brushless Motor**: experiences less wear and requires less maintenance.
- Direct Drive: **eliminates intermediate components** between the motor and the load.
- Silent: **smoother and quieter** thanks to the cushioned sliding guide.
- High performance: rapid **acceleration**, impressive **speed**, high **power**, and greater efficiency.
- Exclusive FAAC patent on **Redundant Automation (RD)**: ensures reliable emergency opening.



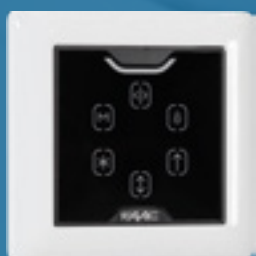
### 2. E3SL CONTROL BOARD

- Simply Connect ready: allows programming and remote management of the automation.
- Intercom function: to optimize wiring and communication between automation systems (with E3XP Expansion Board).
- 2 configurable Inputs and 2 configurable Outputs: to customise the system according to project specific requirements, with CAN BUS technology, the most versatile, efficient, and reliable communication system (up to 10 Inputs and 6 Outputs with E3XP).

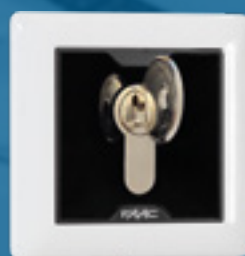


# Functionality matters

## Advanced accessories



**BFQ3**  
Squared  
function keypad  
80x80mm



**KEX3**  
Key  
selector  
80x80mm



## 3. MODULARITY

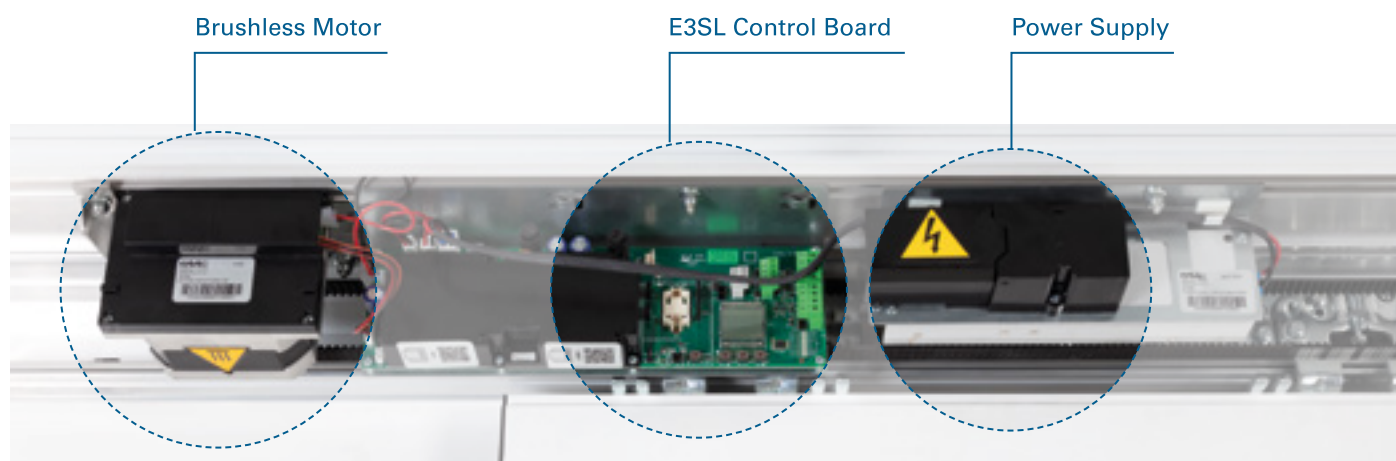
The AS3000 series is highly versatile, adaptable to various needs and modular, thanks to:

- 2 Brushless Motor sizes (H15 and H25)
- 2 Power Supply sizes (150W and 350W)
- The **E3XP Expansion Board**



## 4. EASE OF ASSEMBLY AND INSTALLATION

The supporting beam includes guides for attaching components, ensuring secure and straightforward installation. All components are easily accessible, and maintenance is made easier thanks to magnetic hinges.



A refined range of function selectors, featuring an elegant design and the unmistakable FAAC style.



**DPE3**  
Programming  
selector with  
display



**BFS3**  
Slim  
surface-mounted  
function selector

