

A man and a woman are walking through a modern glass entrance. The woman is wearing a dark jumpsuit, a yellow hat, and a blue scarf, carrying a brown bag and pulling a black suitcase. The man is wearing a blue shirt and white shorts, carrying a striped bag and pulling a black suitcase. They are both holding coffee cups. The entrance has large glass doors and a polished floor that reflects them. A potted plant is visible on the right side of the entrance.

AS3000 SERIES

AUTOMATION FOR
SLIDING DOORS

FAAC

I First impressions matter. Make yours shine.

Presenting the FAAC AS3000 Series, the latest innovation in our sliding door automation range. Drawing on FAAC's extensive expertise in door automation, it blends innovation, performance, and reliability. The AS3000 Series not only delivering all the essential benefits of automatic doors but also enhances spaces with a welcoming atmosphere.

I Advantages that matter Key benefits

INNOVATION
PERFORMANCE
RELIABILITY



**SILENCE,
LONGEVITY AND
SAFETY OF THE
AUTOMATION**



**MODULARITY AND
OPTIMIZATION OF
COMPONENTS**



**EASY ASSEMBLY
AND INSTALLATION**



**COMPLIANCE
WITH SAFETY AND
PERFORMANCE
DIRECTIVES**

I Where first impressions matter

Versatile applications



**Hotel
chains**



**Healthcare
facilities**



**Public/corporate
facilities**



**Government
buildings**



**Other
facilities**



**Shopping
malls**



| Engineered for what matters most

Safety and environment features



TÜV CERTIFICATION

Compliance with the European Standard EN16005 for use on escape routes.



LOW POWER CONSUMPTION

In standby mode, energy consumption is reduced to a maximum of 0.5W, in compliance with EU Directive 2009/125/EC and EU Regulation 2023/826.



| A matter of flexibility

Product range



AS3000 SERIES SLIDING DOOR AUTOMATION

- AS3010 leaf weight up to 120 Kg
- AS3020 leaf weight up to 200 Kg
- AS3030 leaf weight up to 300 Kg

| A matter of compatibility

The AS3000 Series works seamlessly with:



AIRSLIDE system (FAAC patent) which integrates an automatic sliding door with a built-in air curtain, combining sleek design with energy efficiency. It reduces energy dispersion, enhances air quality by limiting external pollutants, and ensures optimal comfort by minimizing drafts.

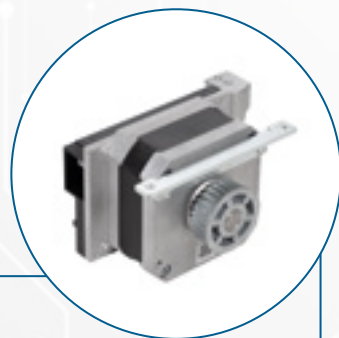
**TK20/TK35/TK50
Door Profiles**
(20mm, 35mm, 50mm thick
aluminium alloy profiles)

When performance matters

Unique strengths

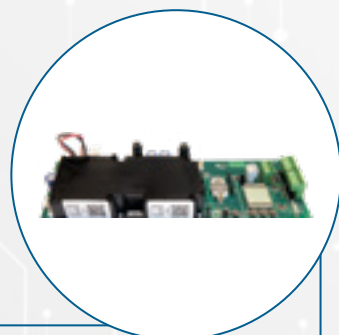
1. BRUSHLESS DIRECT DRIVE MOTOR

- Long-lasting **Brushless Motor**: experiences less wear and requires less maintenance.
- Direct Drive: **eliminates intermediate components** between the motor and the load.
- Silent: **smoother and quieter** thanks to the cushioned sliding guide.
- High performance: rapid **acceleration**, impressive **speed**, high **power**, and greater efficiency.
- Exclusive FAAC patent on **Redundant Automation (RD)**: ensures reliable emergency opening.



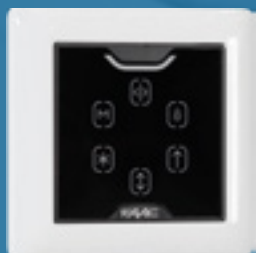
2. E3SL CONTROL BOARD

- Simply Connect ready: allows programming and remote management of the automation.
- Intercom function: to optimize wiring and communication between automation systems (with E3XP Expansion Board).
- 2 configurable Inputs and 2 configurable Outputs: to customise the system according to project specific requirements, with CAN BUS technology, the most versatile, efficient, and reliable communication system (up to 10 Inputs and 6 Outputs with E3XP).

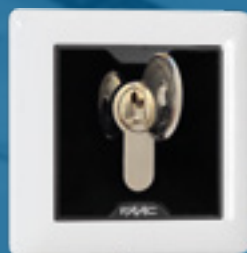


Functionality matters

Advanced accessories



BFQ3
Squared
function keypad
80x80mm



KEX3
Key
selector
80x80mm

3. MODULARITY

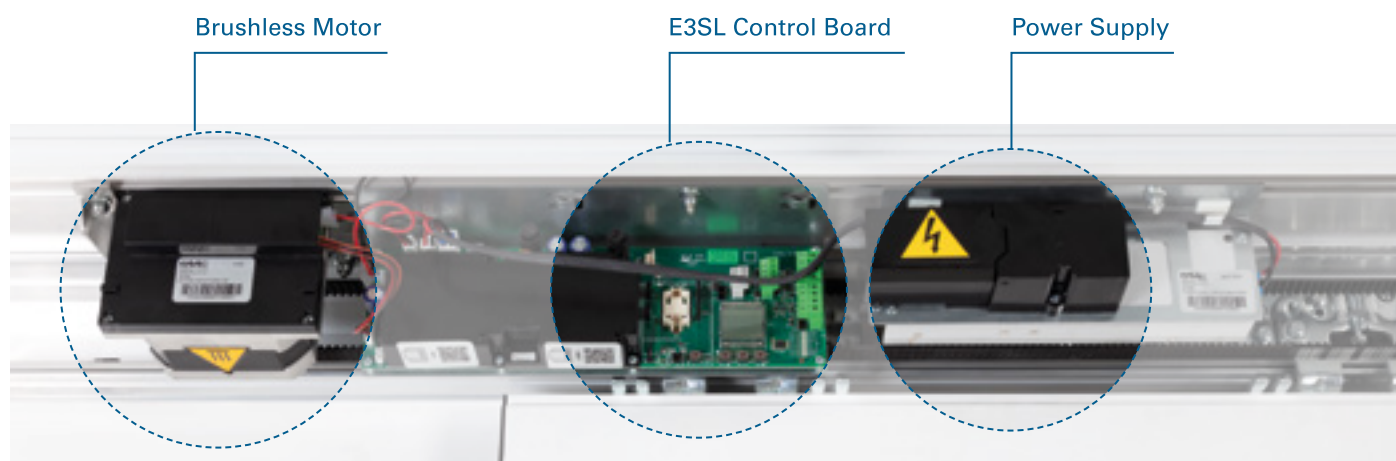
The AS3000 series is highly versatile, adaptable to various needs and modular, thanks to:

- 2 Brushless Motor sizes (H15 and H25)
- 2 Power Supply sizes (150W and 350W)
- The **E3XP Expansion Board**



4. EASE OF ASSEMBLY AND INSTALLATION

The supporting beam includes guides for attaching components, ensuring secure and straightforward installation. All components are easily accessible, and maintenance is made easier thanks to magnetic hinges.



A refined range of function selectors, featuring an elegant design and the unmistakable FAAC style.



DPE3
Programming
selector with
display



BFS3
Slim
surface-mounted
function selector

