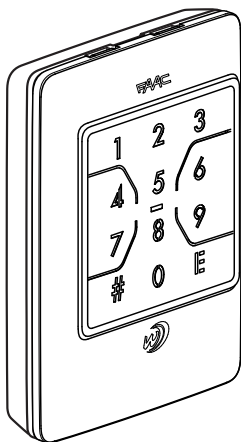


# XKP W

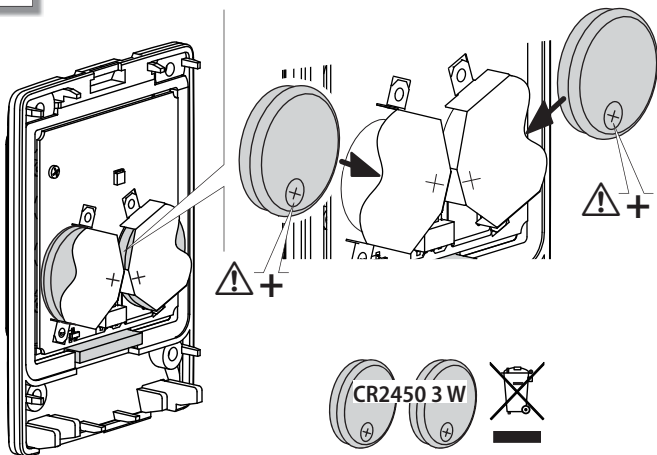


EN

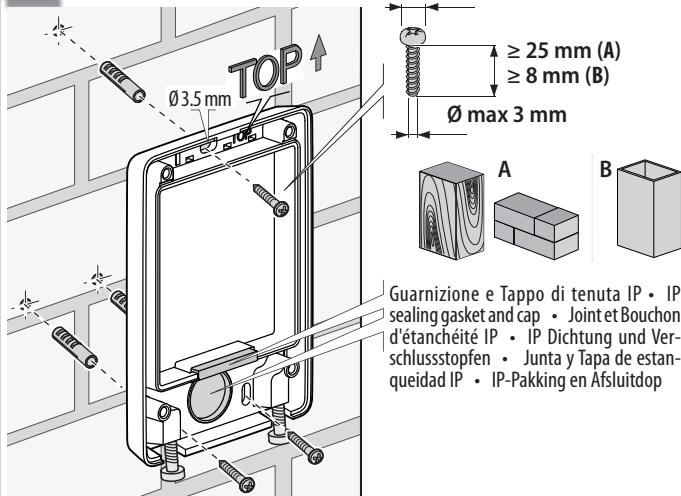
**FAAC**



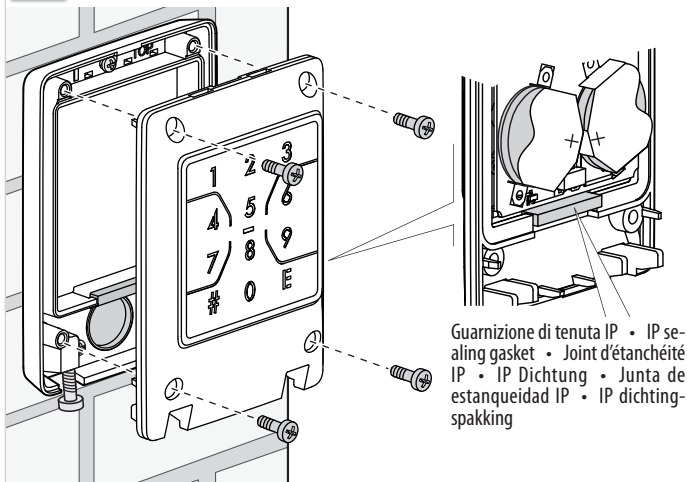
1



2

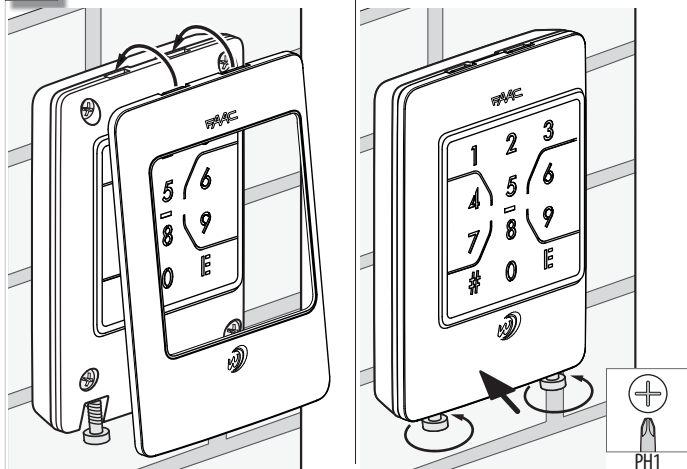


3



Guarnizione di tenuta IP • IP se-  
aling gasket • Joint d'étanchéité  
IP • IP Dichtung • Junta de  
estanqueidad IP • IP dichting-  
spakking

4



PH1

## CE DECLARATION OF CONFORMITY

The Manufacturer

**Company name:** FAAC S.p.A. Soc. Unipersonale

**Address:** Via Calari, 10 - 40069 Zola Predosa BOLOGNA - ITALY

hereby declares on his sole responsibility that the following products:

**Description:** SLH wireless keypad

**Model:** XKP W 433, XKP W 868

comply with the following applicable EU legislations:

2014/53/EU

2011/65/EU

Furthermore, the following harmonised standards have been applied:

EN 62368-1:2014

EN 62311:2008

ETSI EN 301 489-1 V2.2.0:2017

ETSI EN 301 489-3 V2.1.1:2017

ETSI EN 300 220-2 V3.1.1:2017

Bologna, 01-04-2018

CEO



## Contents

1. XKP W .....	2	3.9 Learn the radio code .....	10
Technical data .....	2	3.10 Set the XKP W Slave .....	11
2. Installation .....	3	3.11 RandomisE the radio codes .....	11
3. Programming .....	4	3.12 Easy or Advanced Operation .....	11
3.1 Store a user code .....	5	Programming summary .....	12
3.2 Delete a user code .....	5	4. Usage .....	13
3.3 Delete all user codes .....	6	5. Troubleshooting .....	14
3.4 Change the PWD .....	6	6. Maintenance .....	14
3.5 Restore factory settings .....	6	Replace batteries .....	14
3.6 Direct radio channel button E .....	6		
3.8 Teach the radio code .....	7		
Teach a radio Receiver .....	7		
Teach another XKP W .....	8		
Teach a Radio control .....	9		

## 1. XKP W

The XKP W is included in the FAAC range of radio control devices SLH. In order to operate correctly, all radio devices in a system must have the same frequency, 868 MHz or 433 MHz (see the FAAC catalogue) and in order to be recognised, the channels of the devices must have the same radio code as the receiver.

The XKP W allows the radio channels to be activated by entering the numeric codes reserved for each user. Each user code must be stored on the device using a programming procedure. In order to restrict access, user codes must not be given to other people.

The XKP W has 4 radio channels (Ch1, Ch2, Ch3, Ch4).

A direct radio channel can be programmed that is not code protected, which can be activated using button E.



The XKP W cannot be used as an emergency stop device.

The XKP W cannot be used as a hold-to-run control.

The XKP W is factory set to **Easy Operation** mode: each user code consists of 4 digits and only ever activates one radio channel. Alternatively, **Advanced operating** mode can be set: each user code has a variable length from 2 to 6 digits and can activate one, several or all the radio channels that are available. The user must always specify which radio channel he wishes to activate.

**XKPW master/XKPW slave.** The XKP W is factory set to master, i.e. it can 'teach' its own radio codes to another SLH radio device. The programming function allows you to convert the XKP W into a slave unit (i.e. it can 'learn' but not 'teach').

**Programming** which is password (PWD) protected allows you to:

- store user codes
- delete the user codes individually or all of them
- change the PWD
- restore factory settings
- enable/disable a direct radio channel using

button E

- teach the radio codes to a SLH device or to learn the radio codes from a SLH transmitter
- set the XKP W to a slave unit (this operation is irreversible)
- randomise the radio codes
- set the mode of operation to Easy or Advanced (possible only if the user code memory is empty)

Operation	Easy	Advanced
Code length	4 digits	from 2 to 6 digits
Activatable channels	only one Ch	from 1 to 4 Ch
Direct radio channel	available	available

### TECHNICAL DATA

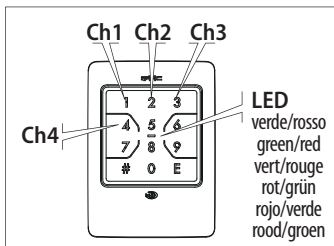
battery operated	CR2450 3 W No. 2
average battery life (10 activations/day)	2 years
radio frequency	
XKP W 433	433.92 MHz
XKP W 868	868.35 MHz
type of coding	SLH encrypted self-learning rolling code
MAX power consumption	20 mA
protection rating	IP 54
operating temperature	-20°C to +55°C
dimensions	100 x 72 x 21 mm
user code memory	max 255 codes

## 2. INSTALLATION



The surface on which it is to be installed must be flat and smooth. The IP sealing gaskets must be present and intact, in the base (🔧 1) and in the body (🔧 3).

- Insert the batteries. Insert the batteries the correct way round and follow the instructions in 🔧 1.
  - The XKP W lights up for 1 s and then goes into standby: The signalling LEDs and backlighting are off.
- Assemble the body and base temporarily.
- The XKP W has to be stored on the radio receiver:
  - On a new system, the XKP W has to teach the radio code to the receiver SLH (§ 3.8).
  - If the XKP W is added to an existing system, the XKP W must learn the radio code from a SLH transmitter that has already been programmed (§ 3.9).
- If you wish to change the Easy/Advanced operating mode, carry out the procedure indicated in § 3.12 before storing the user codes.
- The user codes must be stored on the required radio channels (§ 3.1).
- Carry out any optional programming such as button E (§ 3.6) and the Slave XKP W (§ 3.10).
  - We recommend that you change the PWD (§ 3.4).
- Check that all the user codes work correctly on all the enabled radio channels. Check that the E button is working properly, if enabled.
- Install the base. Follow the instructions in 🔧 2.
- Secure the body to the base (🔧 3). Use fasteners suitable for the material to which it is to be attached and keep to the screw dimensions indicated in the figure for wood / brick / masonry (A) or metal (B).
- Fully tighten the screws in order to compress the IP sealing gaskets.
- Secure the cover (🔧 4).



**Note** Always press one button at a time (if 2 buttons are pressed at the same time, neither is recognised). The timeout between the pressing of buttons is 5 s. Each time a button is pressed, the XKP W issues a short acoustic signal and the backlighting turns off momentarily.

### Key to Symbols

○ LED off	● LED on
* Flashing	* Fast flashing
⌚ Time	🔊 Beep

### Signal on XKP W

OK ✓	1 🔊 ● 0.5 s (green)
ERROR ✘	5 🔊 5 * (red)
TIMEOUT ⌚ waiting for operation	* 60 s (red)
STANDBY	○ ○ (green and red)

### 3. PROGRAMMING

The programming function is PWD protected. In order to restrict access, set a new PWD when the system is programmed for the first time. Do not give the PWD to other people.

**Factory-set PWD:**     **1 2 3 4**

When the XKP W is waiting for an operation, enter:

**# PWD #** ✔ ⌚ 60 s

---

Choose the option 1 ... 12 from the menu and carry out the procedure following the instructions in the relative paragraph.

E.g. for a new user code, enter: **1 #** ✔ ⌚ 60 s

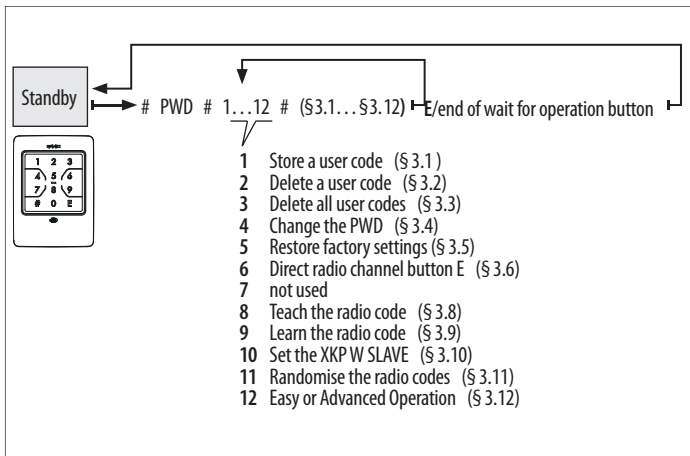
---

If the XKP W indicates an error, it should be reprogrammed correctly.

After the OK message appears, the XKP W waits for an operation for 60 s.

When the XKP W is waiting for an operation, it is possible to carry out another operation from the menu. Press **E** to end the programming (the programming also ends if the timeout expires without any keys being pressed).

When programming has been completed, the XKP W reverts to standby mode.





### 3.1 STORE A USER CODE

This stores the user codes that have to be entered to activate the radio channels. Carry out the procedure according to the mode of operation that has been set: Easy or Advanced.

Only numeric codes can be entered. If you attempt to store a code that is already in memory, the XKP W signals an error.

#### ■ EASY OPERATION

User codes consisting of 4 numbers, in various combinations (from 0000 to 9999). Each code can be enabled for only 1 radio channel, to be specified when it is being stored.

When the XKP W is waiting for an operation, enter:

**1 # code # code E Ch #**   60 s

---

E.g.: User code 6110, enabled for radio channel 1: 1 # 6110 # 6110 E 1 #

#### ■ ADVANCED OPERATION

User codes of variable length from 2 to 6 digits, in various combinations (from 00 to 9999999), e.g. 060464. Each code can be enabled for 1, several or all of the radio channels available.

When the XKP W is waiting for an operation, enter:

**1 # code # code #** (enables all channels)

or

**1 # code # code E Ch #** (enables only 1 channel)

or

**1 # code # code E Ch Ch ... #** (enables several channels)   60 s

---

E.g.:

Code 610, enabled for all radio channels: 1 # 610 # 610 #

Code 610, enabled only for radio channel 1: 1 # 610 # 610 E 1 #

Code 610, enabled for radio channels 1 and 3: 1 # 610 # 610 E 1 3 #

### 3.2 DELETE A USER CODE

When the XKP W is waiting for an operation, enter:

**2 # code # code #**   60 s

---

E.g.: Deleting user code 6110: 2 # 6110 # 6110 #

### 3.3 DELETE ALL USER CODES

When the XKP W is waiting for an operation, enter:

**3 # 3 #**

✓ ⏱ 60 s

### 3.4 CHANGE THE PWD

Enter the PWD (maximum of 6 digits). Only numeric codes can be entered, in any combination from 0 to 999999 e.g. 240764.

When the XKP W is waiting for an operation, enter:

**4 # new PWD # new PWD #**

✓ ⏱ 60 s

### 3.5 RESTORE FACTORY SETTINGS

This restores the XKP W to its factory settings: user code memory empty, direct radio channel (button E) disabled, Easy Operation, PWD: 1 2 3 4, randomised radio codes. When finished, the XKP W exits from programming mode and goes into standby.

When the XKP W is waiting for an operation, enter:

**5 # 5 #**

✓ ○ ○

### 3.6 DIRECT RADIO CHANNEL BUTTON E

Button E can be used to activate a radio channel without having to enter a user code (direct radio channel).

By default, the direct radio channel button E is disabled. To enable it, specify the radio channel (Ch. no. from 1 to 4) to be activated. To disable it, press 0 instead of the number of the radio channel.

When the XKP W is waiting for an operation, enter:

**6 # Ch #** (enabled on the radio channel entered)  
or

**6 # 0 #** (disabled)

✓ ⏱ 60 s

E.g.: Button E, enabled for direct radio channel 1: **6 # 1 #**

### 3.8 TEACH THE RADIO CODE

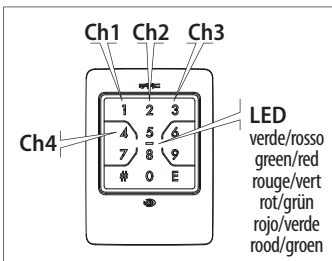
**Teach the radio code.** This allows a **master XKP W** to 'teach' the radio code of a channel to a target device.

This procedure must be carried out for each radio channel that you wish to use.

Only the master XKP W devices can teach the codes.

- If the XKP W is installed on a new radio system, it must teach it to a Radio Receiver.
- If the XKP W is already being used on the radio receiver and you wish to add a radio transmitter, the target device can be a radio control or an additional Master or Slave XKP W.

Follow the procedures indicated below according to the target device.



#### TEACH A RADIO RECEIVER

When the XKP W is waiting for an operation, enter:

**8 # Ch**

✓ ⌚ 25 s

E.g. transmit the Ch 1 radio code: 8 # 1

Place the receiver in learning mode on the required radio channel within 25 s (follow the receiver's instructions and maintain the recommended distance between the devices), then press:

**#** (keep it pressed until confirmation is given that the code has been learnt, then release it) ✓ ⌚ 60 s

The code of the radio channel entered is transmitted (Green LED on). Make sure that the receiver confirms that the code has been learnt (receiver's instructions).

Repeat the procedure for each radio channel required. When using the XKP W for the first time, each radio channel has to be activated twice in succession:

**Easy Operation** enter:

user code E wait until the Green LED turns off, then press E

**Advanced Operation** enter:

# user code E Ch. wait until the green LED turns off, then repeat Ch.

## TEACH ANOTHER XKP W

When the XKP W is waiting for an operation, enter:

**8 # Ch**

✓🕒 25 s

E.g. transmit the Ch 1 radio code: 8 # 1

Place the target XKP W into learning mode on the required radio channel within 25 s (see § 3.9) and bring the two devices into contact with one another as shown in the figure. Then press:

**#** (keep it pressed until confirmation is given that the code has been learnt, then release it) ✓🕒 60 s

The code of the radio channel entered is transmitted (Green LED on). Make sure that the target XKP W confirms that it has been learnt: Green LED on for 0.5 s and 1 beep.

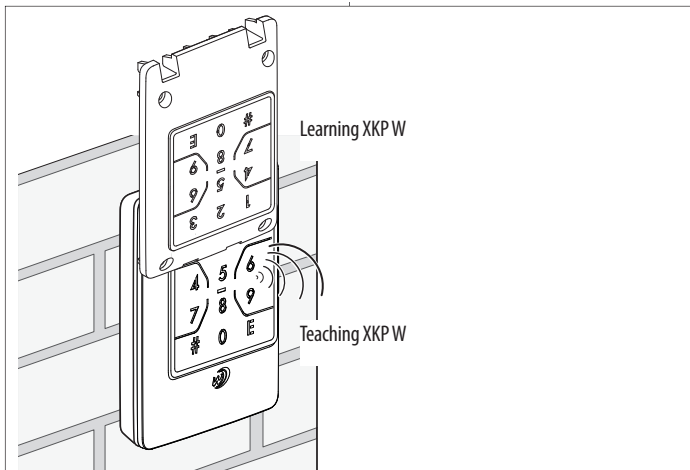
Repeat the procedure for each radio channel required. When using the new XKP W for the first time, each radio channel has to be activated twice in succession.

**Easy Operation** enter:

user code E wait until the Green LED turns off, then press E

**Advanced Operation** enter:

# user code E Ch. wait until the green LED turns off, then repeat Ch.



## TEACH A RADIO CONTROL

When the XKP W is waiting for an operation, enter:

**8 # Ch**

✓ ⌚ 25 s

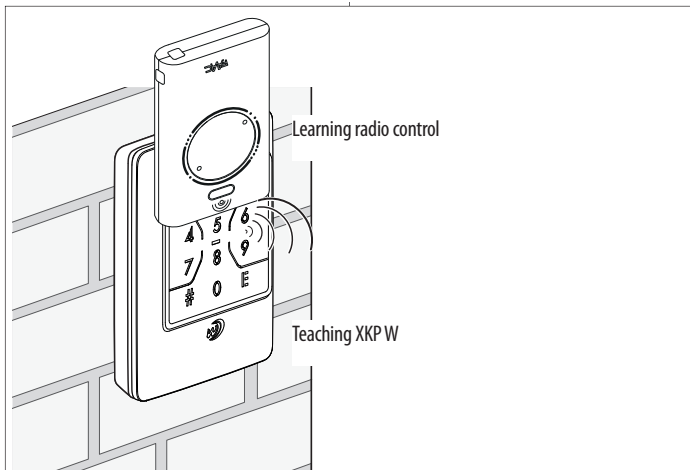
E.g. transmit the Ch 1 radio code: 8 # 1

Bring the two devices into contact with one another within 25 s, as shown in the figure, then press:

**#** (keep it pressed until confirmation is given that the code has been learnt, then release it) ✓ ⌚ 60 s

The code of the radio channel entered is transmitted (Green LED on). At the same time, press the button of the radio control and make sure that the confirmation is given (the LED of the radio control will flash twice and then switch off).

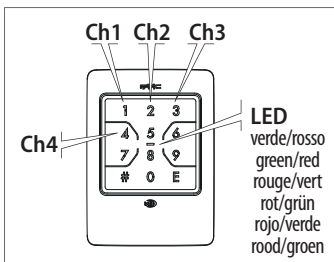
Repeat the procedure for each radio channel required. When using the radio control for the first time, each radio channel has to be activated twice in quick succession.



### 3.9 LEARN THE RADIO CODE

**Learn the radio code.** This procedure allows the radio code of a channel to be 'learnt' from a SLH master radio transmitter. This procedure must be carried out for each radio channel that you wish to use.

Both Master XKP W and Slave XKP W units can learn the code. The teaching device must be a SLH master radio transmitter.



When the XKP W is waiting for an operation, enter:

**9 # Ch. #**

✓ ⌚ 25 s

E.g. for the radio code on radio channel Ch 1: 9 # 1 #

Bring the two devices into contact with one another as shown in the figure (A or B) within 25 s and transmit the radio code from the radio control or from the teaching XKP W:

- on the **radio control** press buttons P1 and P2 simultaneously, then release them and press the channel number
- on the **teaching XKP W** follow the entire procedure indicated in § 3.8

The XKP W learns the radio code on the channel entered, signals OK and waits for an operation.

✓ ⌚ 60 s

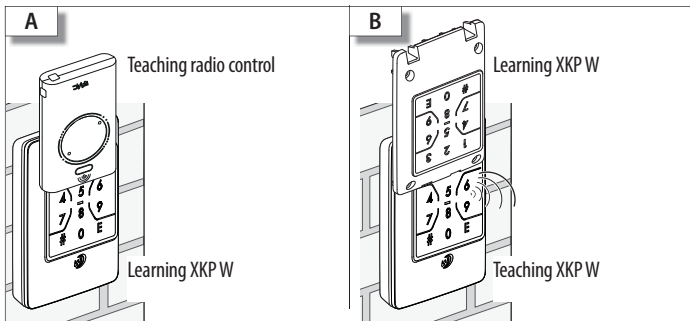
Repeat the procedure for each radio channel required. When using the XKP W for the first time, each radio channel has to be activated twice in succession:

**Easy Operation** enter:

user code E wait until the Green LED turns off, then press E

**Advanced Operation** enter:

# user code E Ch. wait until the green LED turns off, then repeat Ch.



### 3.10 SET THE XKP W SLAVE

This operation is irreversible and converts the XKP W, which is factory set to Master, into a Slave device. A Slave XKP W can learn, but cannot teach a radio code.

When the XKP W is waiting for an operation, enter:

**10 # 105 #**

✓ ⌚ 60 s

---

### 3.11 RANDOMISE THE RADIO CODES

This reassigns new radio codes to the XKP W for all radio channels. Once this has been done, the XKP W keeps the settings and any user codes that were created, but in order for it to function, the XKP W has to be stored again on all the radio receivers on which it has to operate.

When the XKP W is waiting for an operation, enter:

**11 # 114 #**

✓ ⌚ 60 s

---

### 3.12 EASY OR ADVANCED OPERATION

It is only possible to carry out this operation if the user code memory is empty.

When the XKP W is waiting for an operation, enter:

**12 # 0 #** (enables Easy Operation)

or

**12 # 1 #** (enables Advanced Operation)

✓ ⌚ 60 s

---

## PROGRAMMING SUMMARY

### STORE A USER CODE (EASY: from 0000 to 9999 ADVANCED: from 00 to 999999)

# PWD # 1 # code # code E Ch # (enables the channel entered)  
# PWD # 1 # code # cod # (enables all channels)  
# PWD # 1 # code # code E Ch. Ch. ... # (enables the channels entered)

---

### DELETE A USER CODE

# PWD # 2 # code # code #

---

### DELETE ALL USER CODES

# PWD # 3 # 3 #

---

### CHANGE THE PWD

# PWD # 4 # new PWD # new PWD #

---

### RESTORE FACTORY SETTINGS

# PWD # 5 # 5 #

---

### DIRECT RADIO CHANNEL BUTTON E

# PWD # 6 # Ch # (enabled on the channel entered)  
# PWD # 6 # 0 # (disabled)

---

### TEACH THE RADIO CODE FOR EVERY RADIO CHANNEL REQUIRED

# PWD # 8 # Ch Place the target device in learning mode, press # until confirmation is given that it has been learnt by the target device.

---

### LEARN THE RADIO CODE

# PWD # 9 # Ch # Transmit the Ch from the device that teaches the code

---

### SET THE SLAVE XKP W

# PWD # 10 # 105 #

---

### RANDOMISE THE RADIO CODES

# PWD # 11 # 114 #

---

### EASY OR ADVANCED OPERATION

# PWD # 12 # 0 # (enables Easy)  
# PWD # 12 # 1 # (enables Advanced)

---



## 4. USAGE

Follow the safety instructions and recommendations given by the installer.

If the backlighting is off, press any button to switch it on.

**Blind and visually impaired users:** these users can recognise the buttons using the raised dots on the surface.

**COMMAND WITH AN ACCESS CODE** Enter the command sequence according to the mode of operation EASY or ADVANCED. In order to restrict access, do not give the user codes provided by the installer to other people.

**EASY Operation** enter:

**user code E**

XKP W activates the command and indicates OK.

---

The user code is given by the 4 numbers entered before E. If more than 8 numbers are entered before E, the XKP W indicates an error.

**ADVANCED Operation** enter:

**# user code E no. (from 1 to 4)**

XKP W activates the command and indicates OK.

---

If the code is enabled for multiple commands, more than one number can be entered in succession after E has been pressed.

**DIRECT COMMAND:** press the button **E**, XKP W activates the command and indicates OK. If button **E** is not programmed, XKP W indicates an error.

**OK signalling:** 1 BEEP and 1 flash of the green Led, then XKP W reverts to standby mode (leds turn off).

**ERROR signalling:** 5 rapid BEEPS and flashes of the red LED. XKP W does not activate the command and reverts to standby mode.

Error signalled after E is entered: incorrect code. Error signalled before E is entered: more than 8 numbers entered before E. Error signalled after # is entered: # was pressed twice.

**Batteries warning:** in case of Low Batteries, at the end of the command sequence, the backlighting flashes briefly. If, when you digit a button, you do not light up the backlighting, but the fixed red LED, the batteries do not guarantee operation and must be replaced immediately.

**Check the mode of operation of XKP W** enter:

**# 4 E**

---

Check the green LED: 1 turns on briefly once = Easy 2 turns on briefly twice = Advanced

Enter the user code provided by the installer according to the mode of operation, Easy or Advanced; the XKP W signals OK, activates the radio channel and reverts to standby mode.






## 5. TROUBLESHOOTING

Indication	Explanation	Necessary action
When you switch it on, the XKP W gives an error.	Corrupted data in memory.	Check: remove and replace the batteries. If the device indicates an error and then switches off, replace the device.
Programming with Easy Operation: indicates an error after 2 or more channels have been confirmed.	Incorrectly entered: The Easy Operation mode allows only 1 channel to be entered.	Enter correctly.
Programming, immediately after operation 8 has been selected: it indicates an error and exits from programming mode.	You are using a slave XKP W.	Use a master XKP W.
An enabled user code does not activate the radio channel. An error is indicated after the channel to be activated has been selected.	The user code is not enabled for that channel.	Delete the user code and store it again on the required channel.
The XKP W indicates OK, but the radio LED of the receiver does not light up (does not receive the channel).	Check the transmission frequency. Check if the corresponding radio LED lights up on the board.	Use devices that have the same transmission frequency. If it does not light up, repeat the procedure to memorise the keypad on the board.
The XKP W signals OK, the board receives the command (the radio LED lights up) but it does not work.	If the corresponding radio LED lights up, the operator is not ready to move.	Check the board configuration (e.g. Stop active).
The device does not turn on when a button is pressed.	No power or device not working.	Replace the batteries. If the problem persists, replace the device.

## 6. MAINTENANCE

Clean the outer surfaces only with a soft cloth. Do not use detergents or oils. Do not make any modifications to the original components. Only use original FAAC spare parts.

### REPLACE BATTERIES

Refer to  4 and  3 and carry out the procedure in reverse to remove the parts. Replace the batteries. Insert the batteries the correct way round and follow the instructions in  1. The XKP W lights up for 1 s and then goes into standby. Replace the parts. Follow the instructions given in  3 and  4.



The IP sealing gaskets in the base and in the body must be fitted and intact.





FAAC S.p.A. Soc. Unipersonale  
Via Calari, 10 - 40069 Zola Predosa BOLOGNA - ITALY  
Tel. +39 051 61724 - Fax +39 051 09 57 820  
[www.faac.it](http://www.faac.it) - [www.faacgroup.com](http://www.faacgroup.com)