



multi

MULTI

Revolvingdoor  
systems



[edora.com](http://edora.com)

Multi revolving doors provide functionality and a variety of usage possibility bringing revolving door with photocell. It blocks air flow thanks to two-wing revolving door function and provides energy-saving like other revolving doors. It has more capacity in terms of entry/exit traffic. When used as sliding door with photocell, it is possible for wider items, even vehicles to go through. It also offers an elegant design showcase for advertisement purposes.



## standard features

<b>System</b>	: Automatic
<b>Emergency Stop Button</b>	: One for each entry and exit
<b>Disabled Access Button</b>	: One for each entry and exit
<b>Active Hand Sensor</b>	: Standard for each entry
<b>Availability to Stop Manually by Hand</b>	
<b>Passive Anti-Handjamming Edge</b>	: One for each entry and exit
<b>Radar</b>	: Two for each entry and exit
<b>Presence Sensor</b>	: One for each entry and exit
<b>Heel Sensor</b>	: On bottom of the wings
<b>Curved Glasses</b>	: 4+4mm Laminated Glass
<b>Wing Glasses</b>	: 4+4mm Laminated Glass
<b>Lock</b>	: Manual Lock
<b>Roof</b>	: MDF covering for indoor : Aluminium sheet for outdoor
<b>Mechanism</b>	: First quality bearing systems
<b>Brushes</b>	: 70mm horse hair brushes
<b>Ceiling</b>	: 12 pcs. of 1,5mm thick aluminium sheets
<b>Glass Gasket</b>	: Epdm
<b>Canopy</b>	: Aluminium and iron profiles
<b>Color</b>	: Natural anodized / RAL colors
<b>Lighting</b>	: 8 pcs. 8W led downlight
<b>Control Panel</b>	: Touchscreen Panel

## optional features

Mirror Stainless Steel Cladding	: Air Curtain
Golden Mirror Stainless Steel Cladding	: Break-out Leaves
Bright Stainless Steel Cladding	: Extra Manual Lock
Doormat	: Extra Manual Lock + Switch
Door Handle	: Canopy Heating Unit
Colored Glass	: Water Insulation for Outdoor with Drain Duct
Curtain Sensor at Leaves (Wings)	: Extra 4 pcs. 8W Led Downlight
Vertical handshabe Safety Strip	: 20x30x2 mm Stainless Steel Floor Ring

# MULTI REVOLVING DOOR TECHNICAL SPECIFICATIONS



Standard

Anti-Handjamming  
Edge



Standard

Presence  
Sensors



Standard

Disabled and Elderly  
Transition



Standard

Curtain  
Sensor



Standard

Heel Sensors



Standard

Disabled  
Access Button  
Emergency  
Stop Button



Standard

- \* Lighting on-off swithcing
- \* Test and fault detection modes
- \* Setting of speed control and waiting time periods
- \* Torque limit setting
- \* Stop and start time period setting

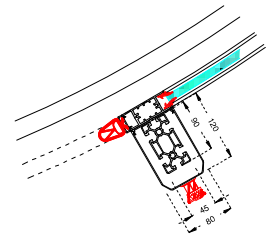
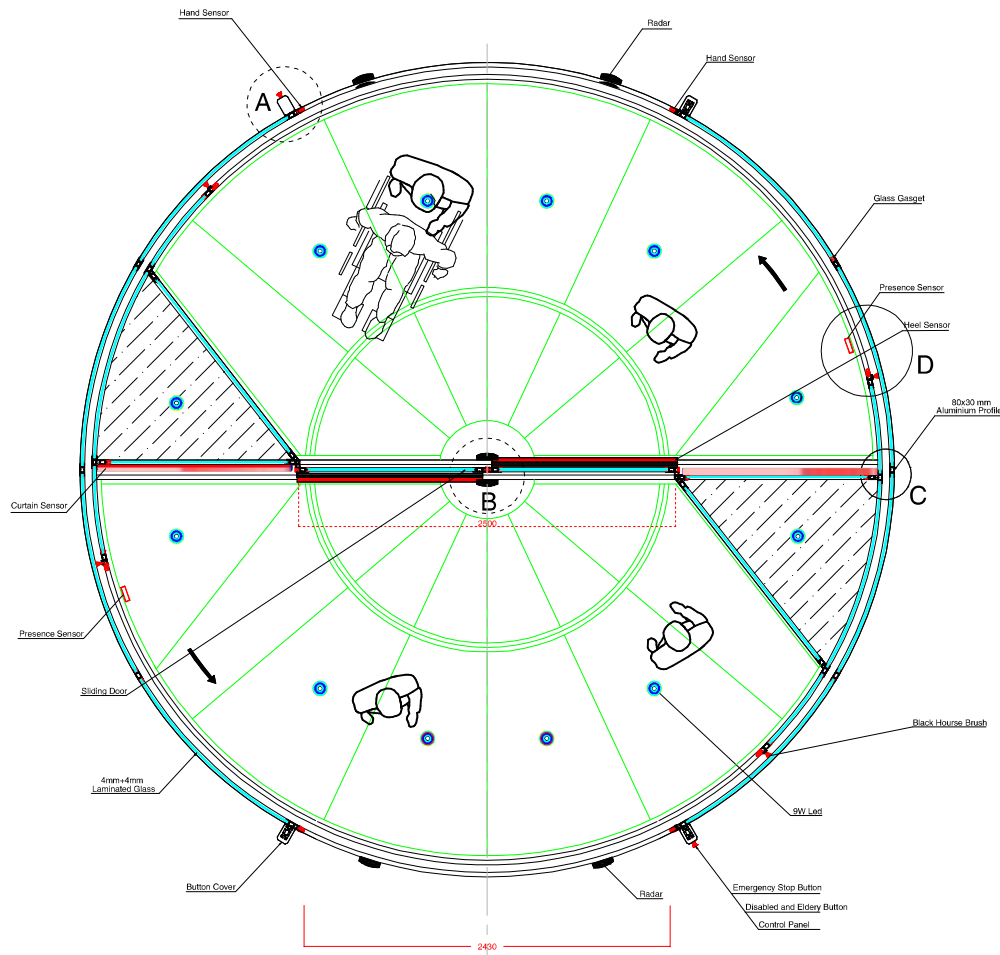


"All settings of the revolving door can be made via this touchscreen"

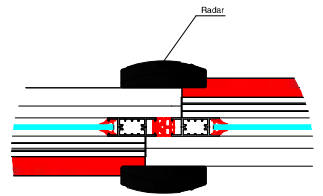


# ED500 MULTI REVOLVING DOOR

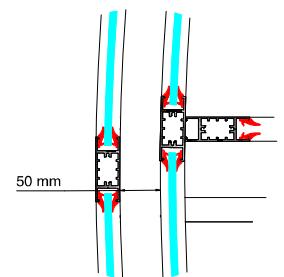
technical specifications/details



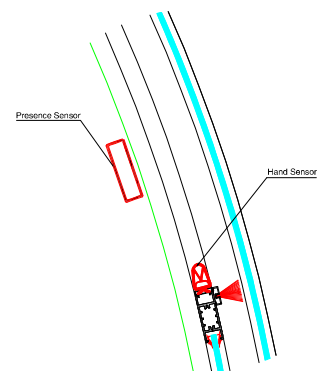
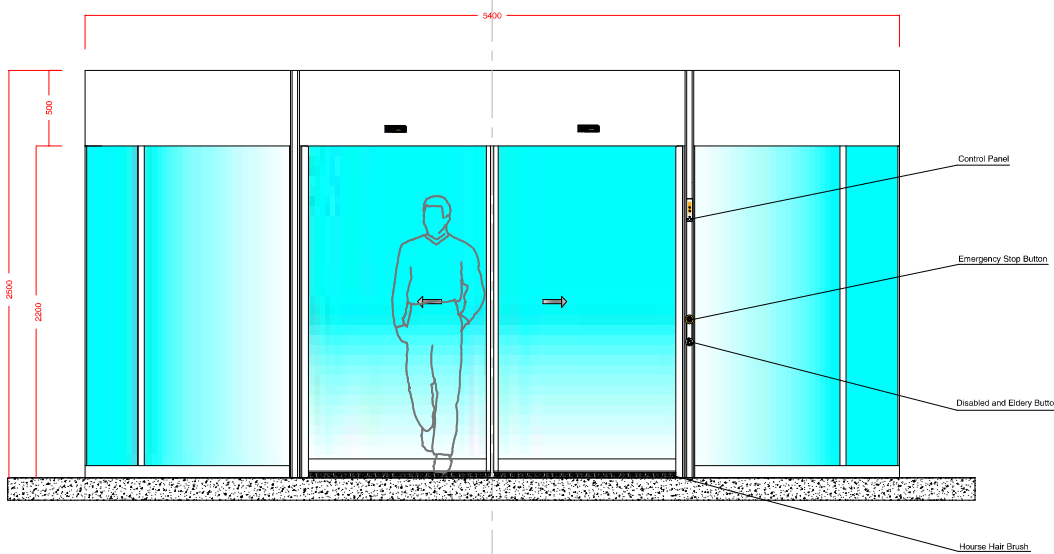
DETAILA



DETAILB



DETAILC



DETAILD



*passage capacities*

						♂ - ♀	♿		
Outer Diameter	Inner Diameter	Mounting Width	Revolving Door Switch Width	Sliding Door Switch Width	Area Between The Wings	Max. Persons*	Capacity/Minute*	Max. Persons*	Capacity/Minute*
3600	3540	3840	1530	1650	4.3	5	75	2	8
4200	4140	4440	1780	1930	5.9	7	95	2	8
4800	4740	5040	2030	2200	7.8	9	105	3	12
5400	5340	5640	2290	2480	9.9	11	115	3	12

\* Indicates the number of people that can be inside a wing when the traffic is proper.

\*\* Indicates the number of maximum people that may unidirectionally pass through per minute.

location of a revolving door



sliding door—open position



sliding door—emergency position



revolving door—lock position



edora®



