

FAAC Solar Power Kit | Datasheet v281019



A greener solution, solar panels utilise a renewable energy source in order to power the installation. Solar energy offers reliability even on a cloudy day, and added flexibility for installations in remote settings. FAAC now offers a complete solar kit which works with the entire 24V range of operators and barriers.

For remote locations with limited usage

The kit has been sized to work in locations where supplying mains voltage would not be practicable or the cost implication would be significant and the expected usage is relatively low throughout the cycle. (Use our online Calculator at [faac.co.uk](https://www.faac.co.uk) to determine suitability)

Compatible with our current 24v control board range

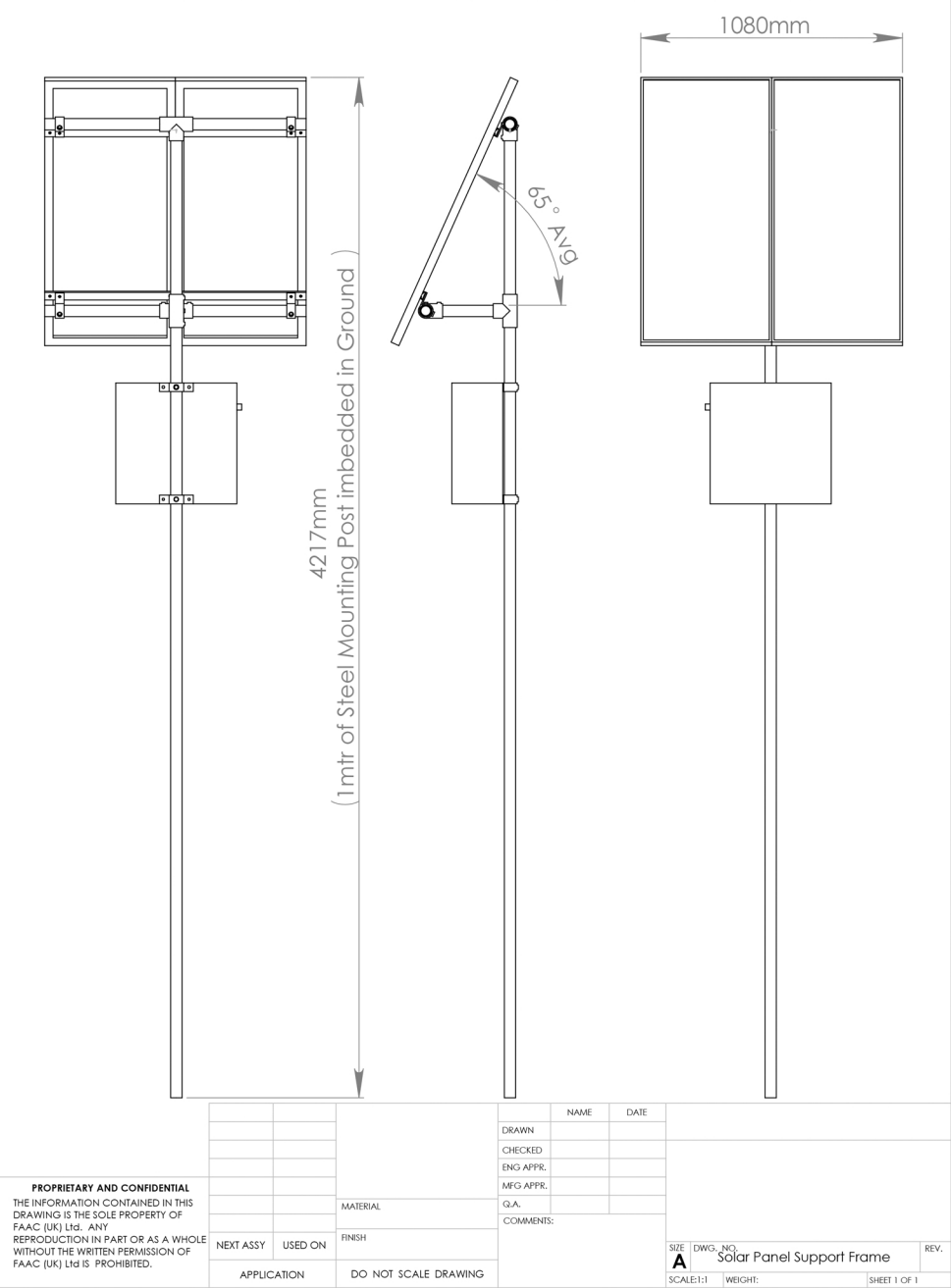
FAAC Solar Panel Kit is designed for use with our B614 24v Barrier, B680H 24v Barrier, C720 and C721 Sliding Gate Operators, E124 24v Control Board and E024S Control Board.

The FAAC Solar Panel Kit includes:

Qty	Description
2	100w Solar Panels 1200mm x 54mm x 35mm each
1	10A 12V/24V Controller
1	MC4 Connector (pair)
1	5m Battery Cable 2.5mm ² with fuse
2	12V 45Ah Battery
1	Steel Enclosure 210mm x 500mm x500mm
1	Vent for Enclosure
1	Battery Shelf
3	Cable Gland
1	Molex Connector
1	Solar panel support frame

Easy to assemble with no special tools required (please note a mobile scaffold tower is recommended during final assembly).

FAAC Solar Power Kit | Datasheet v281019



Technical Data - Solar Panels

Rated Voltage	24V
Maximum Current Load	10 Amp
Battery Capacity	45Ah
Housing Protection Rating	IP66 (assuming cable glands used)
Operating Temperature	-25C to +55C
Dimensions	210mm x 500mm x 500mm
Weight	41.5 Kg including batteries

Technical Data - Controller/Battery incl. Housing

Rated Voltage	24V - 2no 12V Panels wired in Series
Peak Power	100W
Operating Temperature	-40C to +85C
Dimensions	1200mm x 540mm x 35mm
Weight	8.5Kg

Part number:

N-SOLAR200W KITS

FILE	HOME	INSERT	PAGE LAYOUT	FORMULAS	DATA	REVIEW	VIEW
Solar-Panel-Calculation-Protected.xlsx							
C2							
1 System:		B680					
2 Accessories:		XP 30B					
3 Other 24V DC Accessories (Total rating Wh or mAh):		W					
4 Cycles per day:		0					
5 Total power consumption (Watt hours per day):		144.24					
6							
7 Suitable For Solar Operation:		Yes					
8							
9							
10							

Calculator

For your benefit, we have created a calculator in order to determine if the Solar Panel Kit will be suitable for your system based on the parameters provided (Please note that the calculator refers to the E124 Control Board with 2 no S800 Hydraulic Operators as they would generate the greatest load on the Solar Panel Kit). If you have any questions on the sizing, please do not hesitate to contact us to discuss your requirements further.